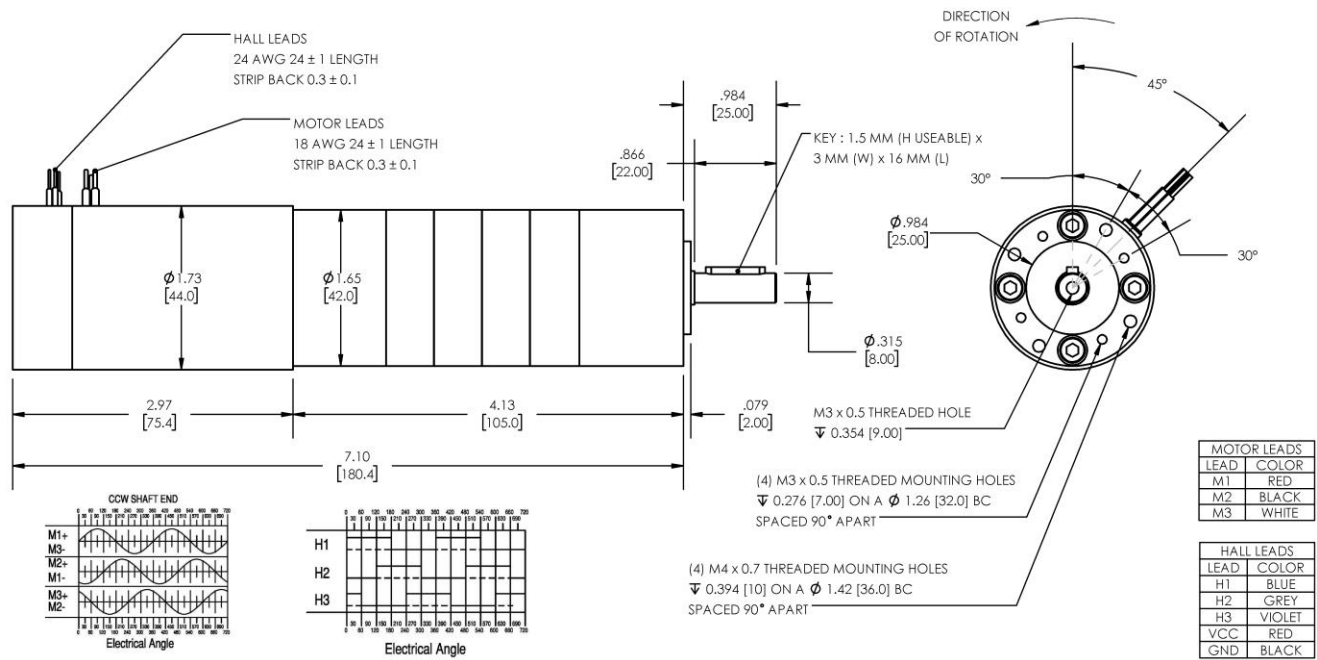


Model Number:

MMP BL44-297G-90V GP42-777



DIMENSIONS ARE INCHES [MM] UNLESS OTHERWISE STATED

PLANETARY GEARMOTOR OUTPUT PARAMETERS:	VALUE	UNITS	TOLERANCE
Gearhead Ratio (exact)	776.76 : 1		
Gearhead Shaft Output Speed (at full-load)	8.2	RPM	MAX
Gearmotor Rated Continuous Torque	266	In-Lbs	MAX
Gearmotor Rated Peak Torque	266++	In-Lbs	----
Gearhead Standard Backlash	63	Arc Minutes	MAX
Gearhead Efficiency	65%	----	----
Output Shaft Radial Load Capacity	68	Lbs	MAX
Output Shaft Axial Load Capacity	25	Lbs	MAX
Gearmotor Total Weight	2.5	Lbs	MAX

++ All Peak Torque values are dependent upon duty. Contact our sales office for details.

DC MOTOR PERFORMANCE PARAMETERS:	VALUE	UNITS	TOLERANCE
Rated DC Voltage	90	DC VOLTS	----
Rated Continuous Current	0.53	AMPERES	----
No-Load Speed	6626	RPM	+/- 15%
Rated Speed	6361	RPM	+/- 15%
Rated Continuous Power Out	40	WATTS	+/- 15%
Rated Continuous Torque	8.4	OZ-IN	----
Peak Torque (motor only)	141	OZ-IN	----
No-Load Current	0.07	AMPERES	10%
Back EMF Constant (Ke)	13.5	V/KRPM	+/- 10%
Torque Constant (Kt)	18.3	OZ-IN/AMP	+/- 10%
DC Armature Resistance	7.80	OHMS	+/- 15%
Armature Inductance	6.48	mH	+/- 15%
Armature temperature	155	DEG. C	MAX

NOTES:

- ENCODER & BRAKE OPTIONS AVAILABLE – [FOLLOW THIS LINK FOR DETAILS](#)
- NEMA MOUNTING FLANGE OPTION AVAILABLE – [FOLLOW THIS LINK FOR DETAILS](#)

MIDWEST MOTION PRODUCTS, INC

DESIGN, MANUFACTURING & DISTRIBUTION - MOTION CONTROL EQUIPMENT

www.midwestmotion.com

email: sales@midwestmotion.com